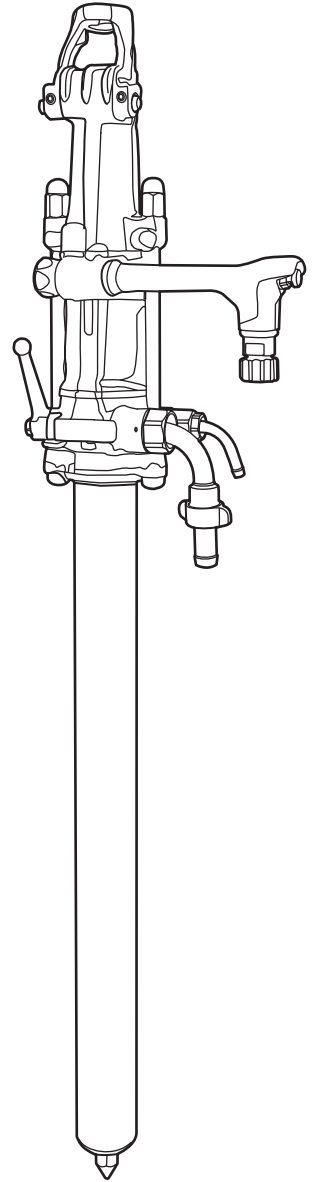


Spare parts list

Stoppers



Contents

General information.....	5
Spare parts list.....	6
BBD 46 WS-6.....	6
BBD 46 WS-8.....	10
BBD 46 WR-6.....	14
BBD 46 WR-8.....	18
Accessories.....	21
Accessories.....	21
Rock drill AIR-OIL.....	21
Optional equipment.....	22
Kits.....	23
Seal kit.....	23
Side bolt kit.....	23

General information

This spare parts list applies to the following:

Part number	Description
8311 0202 11	Stoper BBD 46 WS-6
8311 0202 03	Stoper BBD 46 WS-8
8311 0202 29	Stoper BBD 46 WR-6
8311 0202 37	Stoper BBD 46 WR-8

Use only authorized parts. Any damage or malfunction caused by the use of unauthorized parts is not covered by Warranty or Product Liability. Any unauthorized use or copying of the contents or any part thereof is prohibited. This applies in particular to trademarks, model denominations, part numbers, and drawings.

Instructions for use

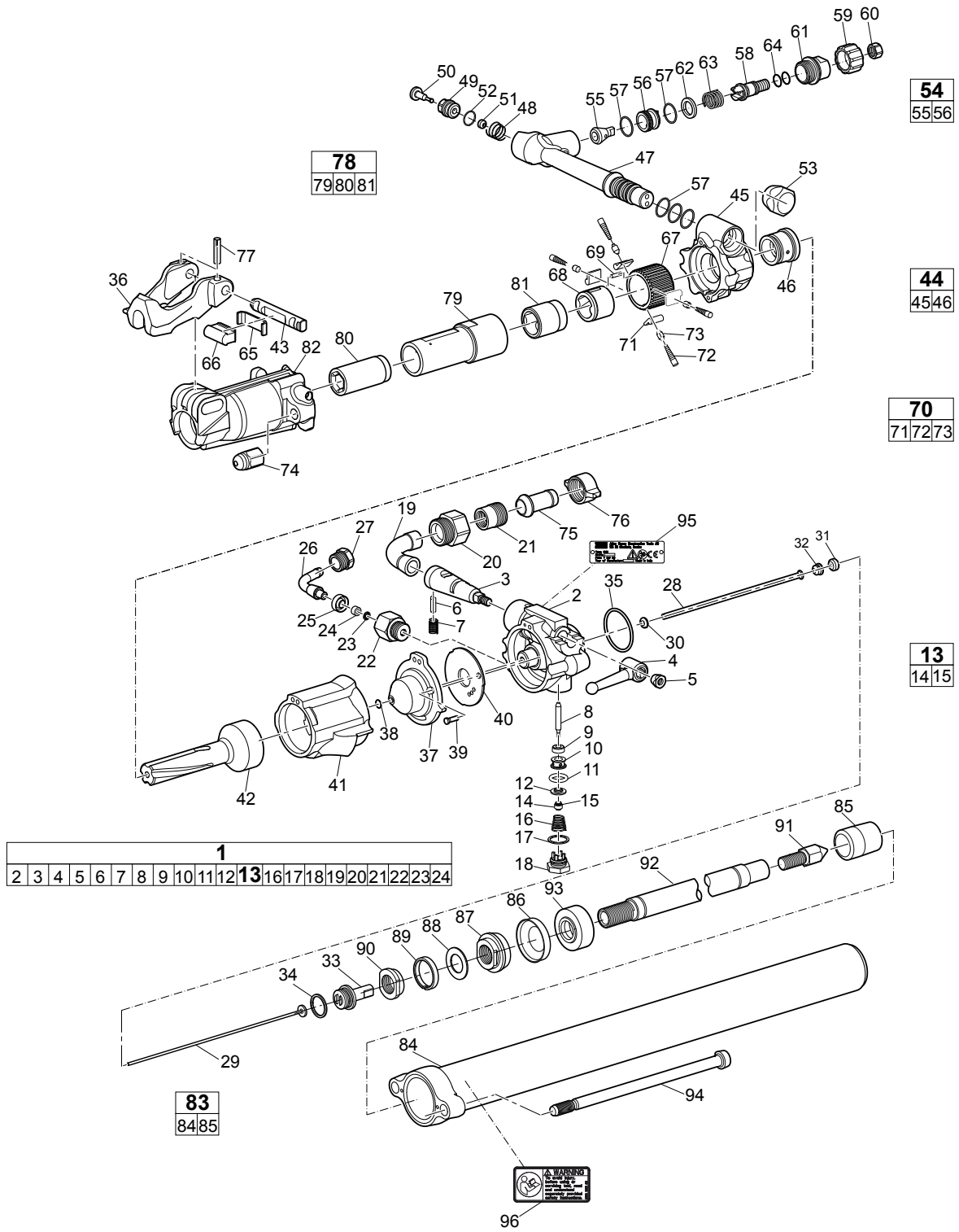
This spare parts list contains no safety regulations and is merely intended to assist in the ordering of spare parts.

For information about operating, servicing, or repairing, the relevant Safety and operating instructions must be consulted at all costs.

Please observe the safety instructions listed in the relevant Safety and operating instructions!

Spare parts list

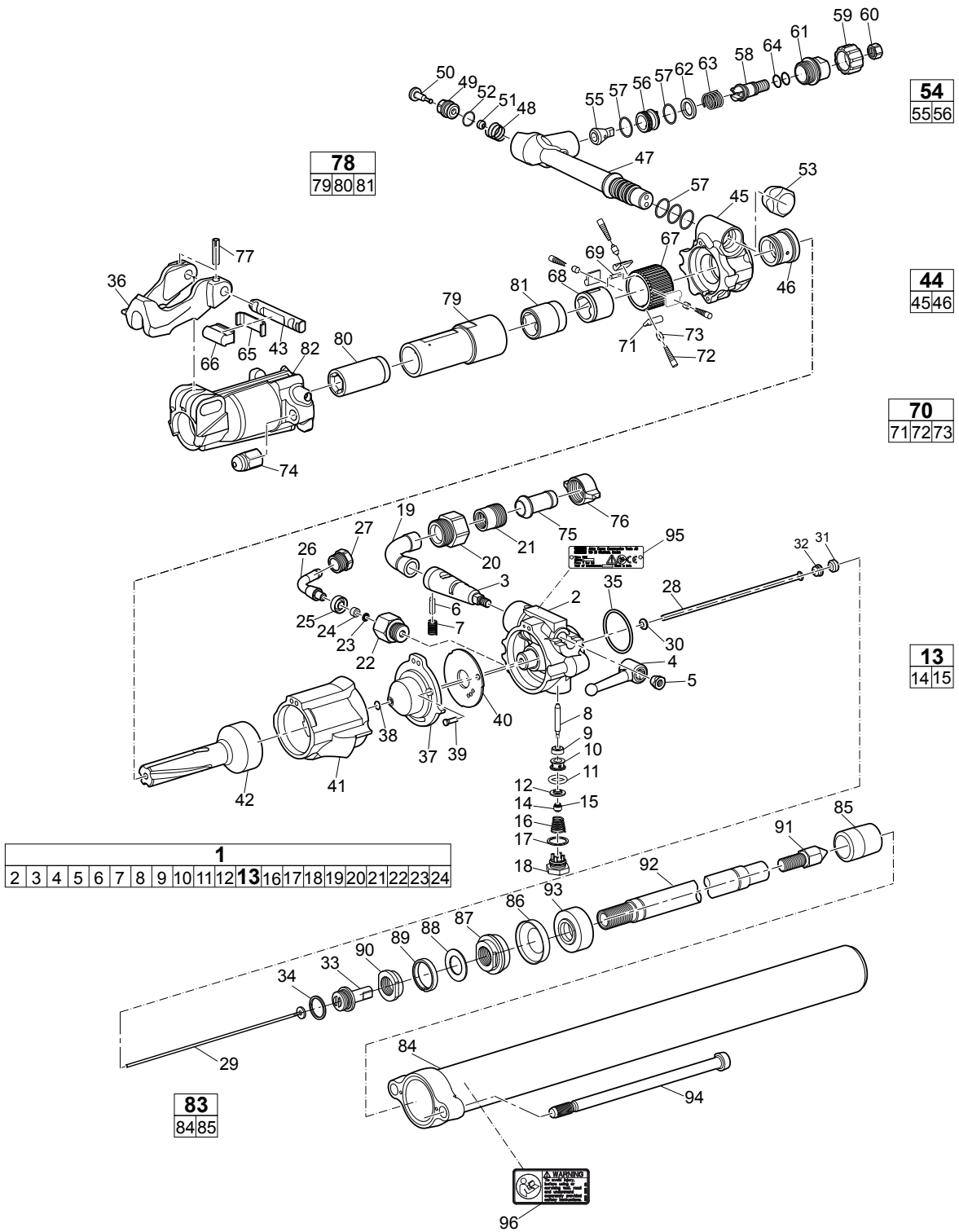
BBD 46 WS-6



No.	Description	Remark	Quantity	Part number
1(2-12,13,16-24)	Back head, complete		1	3131 0140 80
2	Back head		1	-
3	Valve		1	3131 0002 00
4	Throttle lever		1	3121 0065 00
5	Conical nut		1	3006 8734 00
6	Pawl pin		1	3121 0066 00
7	Spring		1	3121 0067 00
8	Valve pin		1	3121 0070 00
9	Packing		1	3106 9670 00
10	Bushing		1	3121 0071 00
11	O-ring	14.2 x 5 mm (70 shore) 0.56 x 0.20 in. (70 shore)	1	3121 0072 00
12	Valve seat		1	3106 9673 00
13(14-15)	Valve body, complete		1	3115 0982 80
14	Valve body		1	-
15	O-ring	5.3 x 2.4 mm (70 shore) 0.21 x 0.09 in. (70 shore)	1	0663 2112 00
16	Conical spring		1	3100 9240 21
17	Packing		1	3106 9675 00
18	Adapter		1	3106 9676 00
19	Inlet nipple		1	3106 8747 00
20	Adapter		1	3121 0068 00
21	Adapter		1	3100 9642 00
22	Adapter		1	3121 0010 00
23	Strainer		1	3121 0011 00
24	Packing		1	3121 0012 00
25	Packing		1	3100 9653 00
26	Hose nipple	12.5 mm ½ in.	1	3100 9654 00
27	Adapter		1	3100 9652 00
28	Air flushing tube		1	3131 0142 00
29	Water flushing tube		1	3121 0038 00
30	Packing		1	3121 0602 00
31	Packing		1	3100 9646 00
32	Guide ring		1	3121 0776 00
33	Adapter		1	3131 0141 00
34	Packing		1	3101 4146 00
35	O-ring	59.5 x 3 mm (70 shore) 2.34 x 0.12 in. (70 shore)	1	0663 6136 00
36	Drill steel retainer	22 x 108 mm 7/8 x 4 1/4 in.	1	3121 0851 00
37	Cover		1	3121 0107 00
38	O-ring	7.3 x 2.4 mm (70 shore) 0.29 x 0.09 in. (70 shore)	1	0663 2114 00
39	Spring pin		1	3100 9665 00
40	Main valve		1	3121 0486 00
41	Cylinder		1	3131 0004 00
42	Piston		1	3121 0015 00
43	Retainer pin		1	3121 0852 00
44(45-46)	Intermediate part, complete		1	3121 0085 80
45	Intermediate part		1	-
46	Bushing		1	3121 0086 00
47	Throttle lever		1	3131 0005 00
48	Spring		1	3131 0006 00
49	Valve sleeve		1	3131 0007 00

No.	Description	Remark	Quantity	Part number
50	Valve pin		1	3131 0008 00
51	Valve body		1	3131 0009 00
52	O-ring		1	0663 2124 00
53	Conical nut		1	3131 0017 00
54(55-56)	Valve, complete		1	3131 0010 80
55	Valve		1	-
56	Valve liner		1	-
57	O-ring	26.2 x 3 mm (70 shore) 1.03 x 0.12 in. (70 shore)	5	0663 2128 00
58	Shaft		1	3131 0011 00
59	Wheel		1	3131 0012 00
60	Nut		1	3131 0013 00
61	Adapter		1	3131 0014 00
62	Washer		1	3131 0015 00
63	Spring		1	3131 0016 00
64	O-ring	15.3 x 2.4 mm (70 shore) 0.60 x 0.09 in. (70 shore)	2	0663 2122 00
65	Buffer plate		1	3121 0029 00
66	Buffer		1	3121 0030 00
67	Ratchet wheel		1	3121 0880 00
68	Rifle nut		1	3121 0896 00
69	Pin	M6 x 20 mm	2	0102 0279 00
70(71-73)	Pawl, complete		1	3115 9201 90
71	Pawl		4	3101 3159 00
72	Pressure spring		4	3121 0020 00
73	Pawl pin		4	3121 0021 00
74	Side bolt nut		2	3121 0872 00
75	Hose nipple	25 mm 1 in.	1	9000 0326 00
76	Wing nut		1	9000 0339 00
77	Spring pin		2	0108 3392 00
78(79-81)	Rotation chuck, complete		1	3121 5001 80
79	Rotation chuck		1	-
80	Rotation chuck bushing	22 x 108 mm 7/8 x 4 1/4 in.	1	3121 0846 00
81	Chuck nut		1	3121 0101 00
82	Front head		1	3121 0102 00
83(84-85)	Feed cylinder, complete		1	3132 0001 80
84	Feed cylinder		1	-
85	Bushing		1	3132 0005 00
86	Seal		1	3162 0976 00
87	Nut		1	3132 0016 00
88	Washer		1	3132 0017 00
89	Brake ring		1	3132 0018 00
90	Back-up ring		1	3132 0019 00
91	Spike		1	3132 0020 00
92	Piston rod		1	3132 0008 00
93	Piston		1	3132 0014 00
94	Side bolt		2	3131 0021 00
95	Data plate		1	-
96	Safety label		1	3310 1602 00

BBD 46 WS-8



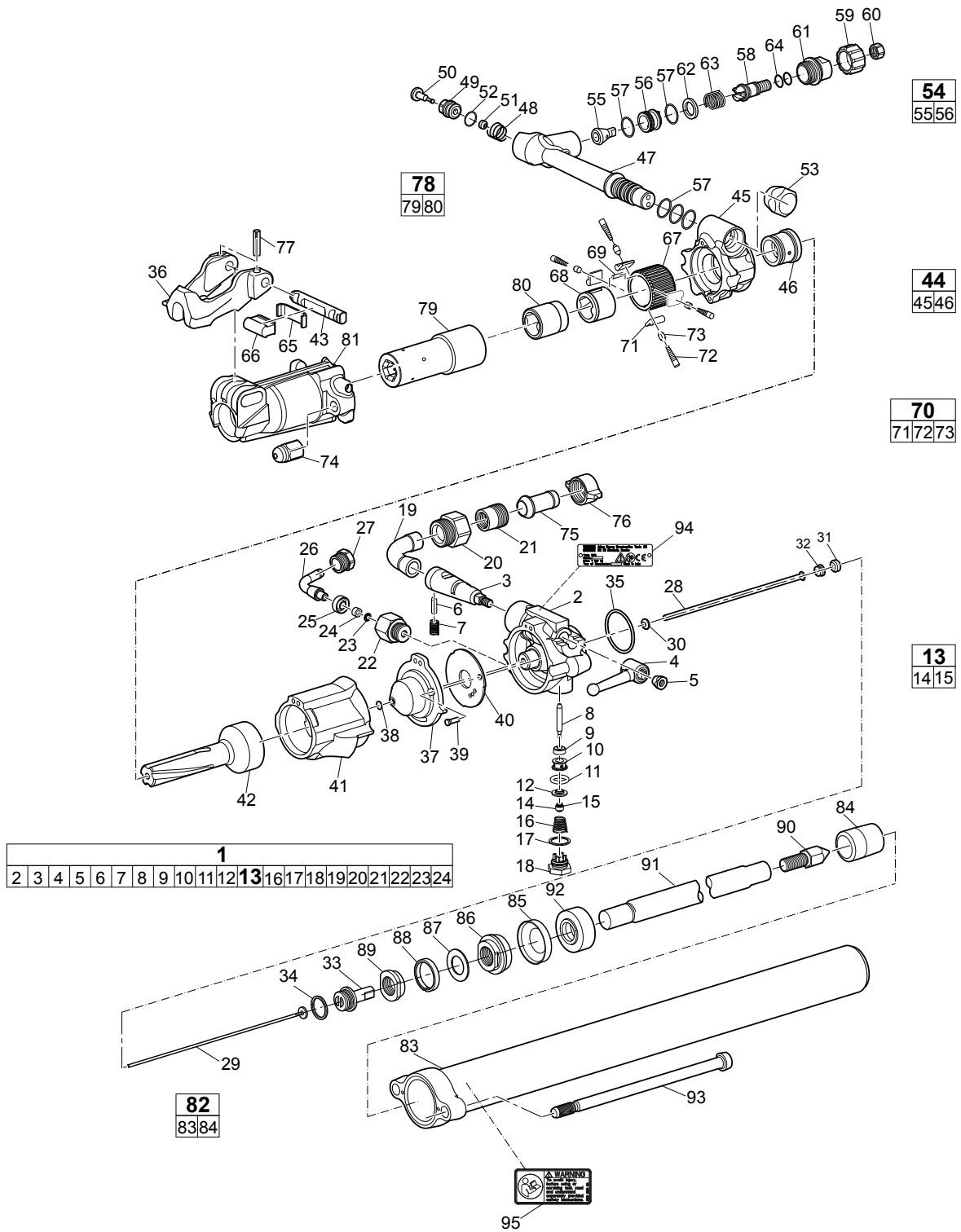
No.	Description	Remark	Quantity	Part number
1(2-12,13,16-24)	Back head, complete		1	3131 0140 80
2	Back head		1	-
3	Valve		1	3131 0002 00
4	Throttle lever		1	3121 0065 00
5	Conical nut		1	3006 8734 00
6	Pawl pin		1	3121 0066 00
7	Spring		1	3121 0067 00
8	Valve pin		1	3121 0070 00
9	Packing		1	3106 9670 00
10	Bushing		1	3121 0071 00
11	O-ring	14.2 x 5 mm (70 shore) 0.56 x 0.20 in. (70 shore)	1	3121 0072 00
12	Valve seat		1	3106 9673 00
13(14-15)	Valve body, complete		1	3115 0982 80
14	Valve body		1	-
15	O-ring	5.3 x 2.4 mm (70 shore) 0.21 x 0.09 in. (70 shore)	1	0663 2112 00
16	Conical spring		1	3100 9240 21
17	Packing		1	3106 9675 00
18	Adapter		1	3106 9676 00
19	Inlet nipple		1	3106 8747 00
20	Adapter		1	3121 0068 00
21	Adapter		1	3100 9642 00
22	Adapter		1	3121 0010 00
23	Strainer		1	3121 0011 00
24	Packing		1	3121 0012 00
25	Packing		1	3100 9653 00
26	Hose nipple	12.5 mm ½ in.	1	3100 9654 00
27	Adapter		1	3100 9652 00
28	Air flushing tube		1	3131 0142 00
29	Water flushing tube		1	3121 0038 00
30	Packing		1	3121 0602 00
31	Packing		1	3100 9646 00
32	Guide ring		1	3121 0776 00
33	Adapter		1	3131 0141 00
34	Packing		1	3101 4146 00
35	O-ring	59.5 x 3 mm (70 shore) 2.34 x 0.12 in. (70 shore)	1	0663 6136 00
36	Drill steel retainer	22 x 108 mm 7/8 x 4 1/4 in.	1	3121 0851 00
37	Cover		1	3121 0107 00
38	O-ring	7.3 x 2.4 mm (70 shore) 0.29 x 0.09 in. (70 shore)	1	0663 2114 00
39	Spring pin		1	3100 9665 00
40	Main valve		1	3121 0486 00
41	Cylinder		1	3131 0004 00
42	Piston		1	3121 0015 00
43	Retainer pin		1	3121 0852 00
44(45-46)	Intermediate part, complete		1	3121 0085 80
45	Intermediate part		1	-
46	Bushing		1	3121 0086 00
47	Throttle lever		1	3131 0005 00
48	Spring		1	3131 0006 00
49	Valve sleeve		1	3131 0007 00

No.	Description	Remark	Quantity	Part number
50	Valve pin		1	3131 0008 00
51	Valve body		1	3131 0009 00
52	O-ring		1	0663 2124 00
53	Conical nut		1	3131 0017 00
54(55-56)	Valve, complete		1	3131 0010 80
55	Valve		1	-
56	Valve liner		1	-
57	O-ring	26.2 x 3 mm (70 shore) 1.03 x 0.12 in. (70 shore)	5	0663 2128 00
58	Shaft		1	3131 0011 00
59	Wheel		1	3131 0012 00
60	Nut		1	3131 0013 00
61	Adapter		1	3131 0014 00
62	Washer		1	3131 0015 00
63	Spring		1	3131 0016 00
64	O-ring	15.3 x 2.4 mm (70 shore) 0.60 x 0.09 in. (70 shore)	2	0663 2122 00
65	Buffer plate		1	3121 0029 00
66	Buffer		1	3121 0030 00
67	Ratchet wheel		1	3121 0880 00
68	Rifle nut		1	3121 0896 00
69	Pin	M6 x 20 mm	2	0102 0279 00
70(71-73)	Pawl, complete		1	3115 9201 90
71	Pawl		4	3101 3159 00
72	Pressure spring		4	3121 0020 00
73	Pawl pin		4	3121 0021 00
74	Side bolt nut		2	3121 0872 00
75	Hose nipple	25 mm 1 in.	1	9000 0326 00
76	Wing nut		1	9000 0339 00
77	Spring pin		2	0108 3392 00
78(79-81)	Rotation chuck, complete		1	3121 5001 80
79	Rotation chuck		1	-
80	Rotation chuck bushing	22 x 108 mm 7/8 x 4 1/4 in.	1	3121 0846 00
81	Chuck nut		1	3121 0101 00
82	Front head		1	3121 0102 00
83(84-85)	Feed cylinder, complete		1	3132 0006 80
84	Feed cylinder		1	-
85	Bushing		1	3132 0005 00
86	Seal		1	3162 0976 00
87	Nut		1	3132 0016 00
88	Washer		1	3132 0017 00
89	Brake ring		1	3132 0018 00
90	Back-up ring		1	3132 0019 00
91	Spike		1	3132 0020 00
92	Piston rod		1	3132 0009 00
93	Piston		1	3132 0014 00
94	Side bolt		2	3131 0021 00
95	Data plate		1	-
96	Safety label		1	3310 1602 00

No.	Description	Remark	Quantity	Part number
1(2-12,13,16-24)	Back head, complete		1	3131 0140 80
2	Back head		1	-
3	Valve		1	3131 0002 00
4	Throttle lever		1	3121 0065 00
5	Conical nut		1	3006 8734 00
6	Pawl pin		1	3121 0066 00
7	Spring		1	3121 0067 00
8	Valve pin		1	3121 0070 00
9	Packing		1	3106 9670 00
10	Bushing		1	3121 0071 00
11	O-ring	14.2 x 5 mm (70 shore) 0.56 x 0.20 in. (70 shore)	1	3121 0072 00
12	Valve seat		1	3106 9673 00
13(14-15)	Valve body, complete		1	3115 0982 80
14	Valve body		1	-
15	O-ring	5.3 x 2.4 mm (70 shore) 0.21 x 0.09 in. (70 shore)	1	0663 2112 00
16	Conical spring		1	3100 9240 21
17	Packing		1	3106 9675 00
18	Adapter		1	3106 9676 00
19	Inlet nipple		1	3106 8747 00
20	Adapter		1	3121 0068 00
21	Adapter		1	3100 9642 00
22	Adapter		1	3121 0010 00
23	Strainer		1	3121 0011 00
24	Packing		1	3121 0012 00
25	Packing		1	3100 9653 00
26	Hose nipple	12.5 mm ½ in.	1	3100 9654 00
27	Adapter		1	3100 9652 00
28	Air flushing tube		1	3131 0142 00
29	Water flushing tube		1	3121 0038 00
30	Packing		1	3121 0602 00
31	Packing		1	3100 9646 00
32	Guide ring		1	3121 0776 00
33	Adapter		1	3131 0141 00
34	Packing		1	3101 4146 00
35	O-ring	59.5 x 3 mm (70 shore) 2.34 x 0.12 in. (70 shore)	1	0663 6136 00
36	Drill steel retainer	22 x 108 mm 7/8 x 4 1/4 in.	1	3121 0851 00
37	Cover		1	3121 0107 00
38	O-ring	7.3 x 2.4 mm (70 shore) 0.29 x 0.09 in. (70 shore)	1	0663 2114 00
39	Spring pin		1	3100 9665 00
40	Main valve		1	3121 0486 00
41	Cylinder		1	3131 0004 00
42	Piston		1	3121 0015 00
43	Retainer pin		1	3121 0852 00
44(45-46)	Intermediate part, complete		1	3121 0085 80
45	Intermediate part		1	-
46	Bushing		1	3121 0086 00
47	Throttle lever		1	3131 0005 00
48	Spring		1	3131 0006 00
49	Valve sleeve		1	3131 0007 00

No.	Description	Remark	Quantity	Part number
50	Valve pin		1	3131 0008 00
51	Valve body		1	3131 0009 00
52	O-ring		1	0663 2124 00
53	Conical nut		1	3131 0017 00
54(55-56)	Valve, complete		1	3131 0010 80
55	Valve		1	-
56	Valve liner		1	-
57	O-ring	26.2 x 3 mm (70 shore) 1.03 x 0.12 in. (70 shore)	5	0663 2128 00
58	Shaft		1	3131 0011 00
59	Wheel		1	3131 0012 00
60	Nut		1	3131 0013 00
61	Adapter		1	3131 0014 00
62	Washer		1	3131 0015 00
63	Spring		1	3131 0016 00
64	O-ring	15.3 x 2.4 mm (70 shore) 0.60 x 0.09 in. (70 shore)	2	0663 2122 00
65	Buffer plate		1	3121 0029 00
66	Buffer		1	3121 0030 00
67	Ratchet wheel		1	3121 0880 00
68	Rifle nut		1	3121 0896 00
69	Pin	M6 x 20 mm	2	0102 0279 00
70(71-73)	Pawl, complete		1	3115 9201 90
71	Pawl		4	3101 3159 00
72	Pressure spring		4	3121 0020 00
73	Pawl pin		4	3121 0021 00
74	Side bolt nut		2	3121 0872 00
75	Hose nipple	25 mm 1 in.	1	9000 0326 00
76	Wing nut		1	9000 0339 00
77	Spring pin		2	0108 3392 00
78(79-80)	Rotation chuck, complete		1	3131 0022 80
79	Rotation chuck		1	-
80	Chuck nut		1	3131 0023 00
81	Front head		1	3131 0024 00
82(83-84)	Feed cylinder, complete		1	3132 0001 80
83	Feed cylinder		1	-
84	Bushing		1	3132 0005 00
85	Seal		1	3162 0976 00
86	Nut		1	3132 0016 00
87	Washer		1	3132 0017 00
88	Brake ring		1	3132 0018 00
89	Back-up ring		1	3132 0019 00
90	Spike		1	3132 0020 00
91	Piston rod		1	3132 0008 00
92	Piston		1	3132 0014 00
93	Side bolt		2	3131 0021 00
94	Data plate		1	-
95	Safety label		1	3310 1602 00

BBD 46 WR-8



No.	Description	Remark	Quantity	Part number
1(2-12,13,16-24)	Back head, complete		1	3131 0140 80
2	Back head		1	-
3	Valve		1	3131 0002 00
4	Throttle lever		1	3121 0065 00
5	Conical nut		1	3006 8734 00
6	Pawl pin		1	3121 0066 00
7	Spring		1	3121 0067 00
8	Valve pin		1	3121 0070 00
9	Packing		1	3106 9670 00
10	Bushing		1	3121 0071 00
11	O-ring	14.2 x 5 mm (70 shore) 0.56 x 0.20 in. (70 shore)	1	3121 0072 00
12	Valve seat		1	3106 9673 00
13(14-15)	Valve body, complete		1	3115 0982 80
14	Valve body		1	-
15	O-ring	5.3 x 2.4 mm (70 shore) 0.21 x 0.09 in. (70 shore)	1	0663 2112 00
16	Conical spring		1	3100 9240 21
17	Packing		1	3106 9675 00
18	Adapter		1	3106 9676 00
19	Inlet nipple		1	3106 8747 00
20	Adapter		1	3121 0068 00
21	Adapter		1	3100 9642 00
22	Adapter		1	3121 0010 00
23	Strainer		1	3121 0011 00
24	Packing		1	3121 0012 00
25	Packing		1	3100 9653 00
26	Hose nipple	12.5 mm ½ in.	1	3100 9654 00
27	Adapter		1	3100 9652 00
28	Air flushing tube		1	3131 0142 00
29	Water flushing tube		1	3121 0038 00
30	Packing		1	3121 0602 00
31	Packing		1	3100 9646 00
32	Guide ring		1	3121 0776 00
33	Adapter		1	3131 0141 00
34	Packing		1	3101 4146 00
35	O-ring	59.5 x 3 mm (70 shore) 2.34 x 0.12 in. (70 shore)	1	0663 6136 00
36	Drill steel retainer	22 x 108 mm ¾ x 4¼ in.	1	3121 0851 00
37	Cover		1	3121 0107 00
38	O-ring	7.3 x 2.4 mm (70 shore) 0.29 x 0.09 in. (70 shore)	1	0663 2114 00
39	Spring pin		1	3100 9665 00
40	Main valve		1	3121 0486 00
41	Cylinder		1	3131 0004 00
42	Piston		1	3121 0015 00
43	Retainer pin		1	3121 0852 00
44(45-46)	Intermediate part, complete		1	3121 0085 80
45	Intermediate part		1	-
46	Bushing		1	3121 0086 00
47	Throttle lever		1	3131 0005 00
48	Spring		1	3131 0006 00
49	Valve sleeve		1	3131 0007 00

No.	Description	Remark	Quantity	Part number
50	Valve pin		1	3131 0008 00
51	Valve body		1	3131 0009 00
52	O-ring		1	0663 2124 00
53	Conical nut		1	3131 0017 00
54(55-56)	Valve, complete		1	3131 0010 80
55	Valve		1	-
56	Valve liner		1	-
57	O-ring	26.2 x 3 mm (70 shore) 1.03 x 0.12 in. (70 shore)	5	0663 2128 00
58	Shaft		1	3131 0011 00
59	Wheel		1	3131 0012 00
60	Nut		1	3131 0013 00
61	Adapter		1	3131 0014 00
62	Washer		1	3131 0015 00
63	Spring		1	3131 0016 00
64	O-ring	15.3 x 2.4 mm (70 shore) 0.60 x 0.09 in. (70 shore)	2	0663 2122 00
65	Buffer plate		1	3121 0029 00
66	Buffer		1	3121 0030 00
67	Ratchet wheel		1	3121 0880 00
68	Rifle nut		1	3121 0896 00
69	Pin	M6 x 20 mm	2	0102 0279 00
70(71-73)	Pawl, complete		1	3115 9201 90
71	Pawl		4	3101 3159 00
72	Pressure spring		4	3121 0020 00
73	Pawl pin		4	3121 0021 00
74	Side bolt nut		2	3121 0872 00
75	Hose nipple	25 mm 1 in.	1	9000 0326 00
76	Wing nut		1	9000 0339 00
77	Spring pin		2	0108 3392 00
78(79-80)	Rotation chuck, complete		1	3131 0022 80
79	Rotation chuck		1	-
80	Chuck nut		1	3131 0023 00
81	Front head		1	3131 0024 00
82(83-84)	Feed cylinder, complete		1	3132 0006 80
83	Feed cylinder		1	-
84	Bushing		1	3132 0005 00
85	Seal		1	3162 0976 00
86	Nut		1	3132 0016 00
87	Washer		1	3132 0017 00
88	Brake ring		1	3132 0018 00
89	Back-up ring		1	3132 0019 00
90	Spike		1	3132 0020 00
91	Piston rod		1	3132 0009 00
92	Piston		1	3132 0014 00
93	Side bolt		2	3131 0021 00
94	Data plate		1	-
95	Safety label		1	3310 1602 00

Accessories

Accessories

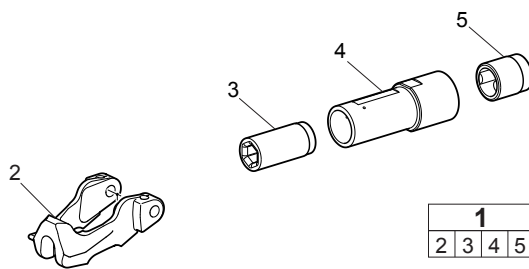
Description	Remark	Quantity	Part number
Compressed air hose for rock drill feed, fitted with couplings	25 mm (1 in.) x 3 m (10 ft)	1	9030 2068 00
Water flushing hose fitted with couplings	12.5 mm (½ in.)	1	9030 2069 00
Lubricator			
BLG 30, for mineral oil		1	8202 5102 05
CLG 30, for both mineral and synthetic oil		1	8202 5102 39
Water separator			
VAM 5A	airflow <120 l/s (254 cfm)	1	8092 0110 82
Air line accessories for 25 mm (1 in.)			
Rubber hose	30 m (98 ft)	1	9030 2041 00
Claw coupling		1	9000 0313 00
Two-piece hose clamp		1	9000 0197 00
Pressure gauge for compressed air and water pressure			
Gauge		1	9090 0550 80
Extra needle set		1	9090 0678 90
Chuck bushing gauge	22 mm (⅞ in.) hexagon shank	1	3091 0038 00
Tools for roof bolting			
Mandrel for 25 mm (0.98 in.) bolt			3081 0001 00
Socket for 37 mm (1.46 in.) hexagon nut			3081 0006 00

Rock drill AIR-OIL

Description	Remark	Quantity	Part number
Rock drill AIR-OIL	1 l (0.22 gallon)	1	8099 0201 01
Rock drill AIR-OIL	1 l (0.22 gallon)	12	8099 0201 81
Rock drill AIR-OIL	4 l (0.88 gallon)	1	8099 0201 04
Rock drill AIR-OIL	4 l (0.88 gallon)	4	8099 0201 84
Rock drill AIR-OIL	10 l (2.2 gallon)	1	8099 0201 10

Optional equipment

Optional for BBD 46 WS 6/8



No.	Description	Remark	Quantity	Part number
1(2-5)	Rotation chuck, complete		1	3121 5001 81
2	Drill steel retainer		1	3121 0888 00
3	Rotation chuck bushing	25 x 108 mm 1 x 4¼ in.	1	3131 0026 00
4	Rotation chuck		1	-
5	Chuck nut		1	3121 0101 00

Kits

Seal kit

Description	Remark	Quantity	Part number
Seal kit		1	3121 5000 93
O-ring	5.3 x 2.4 mm (70 shore) 0.21 x 0.09 in. (70 shore)	1	0663 2112 00
O-ring	7.3 x 2.4 mm (70 shore) 0.29 x 0.09 in. (70 shore)	1	0663 2114 00
O-ring	15.3 x 2.4 mm (70 shore) 0.60 x 0.09 in. (70 shore)	2	0663 2122 00
O-ring		1	0663 2124 00
O-ring	26.2 x 3 mm (70 shore) 1.03 x 0.12 in. (70 shore)	2	0663 2128 00
O-ring	59.5 x 3 mm (70 shore) 2.34 x 0.12 in. (70 shore)	2	0663 6136 00
Rubber packing		1	3100 9646 00
Packing		1	3106 9670 00
Packing		1	3106 9675 00
Packing		1	3121 0012 00
O-ring	14.2 x 5 mm (70 shore) 0.56 x 0.20 in. (70 shore)	1	3121 0072 00
Packing		1	-
Brake ring		1	3132 0018 00
Seal		1	3162 0976 00

Side bolt kit

Description	Remark	Quantity	Part number
Side bolt kit		1	3121 5000 28
Nut		2	3121 0872 00
Side bolt		2	3121 0021 00

Any unauthorized use or copying of the contents or any part thereof is prohibited.
This applies in particular to trademarks, model denominations, part numbers, and
drawings.

© 2010 Atlas Copco Construction Tools AB | No. 9800 0682 01a | 2010-05-10

Atlas Copco

www.atlascopco.com